

BEFORE YOU BEGIN

Do not cut parts off frame before studying each picture thoroughly. Before cutting, match each part number (located on small tabs on the frame) with the corresponding number in each assembly diagram.

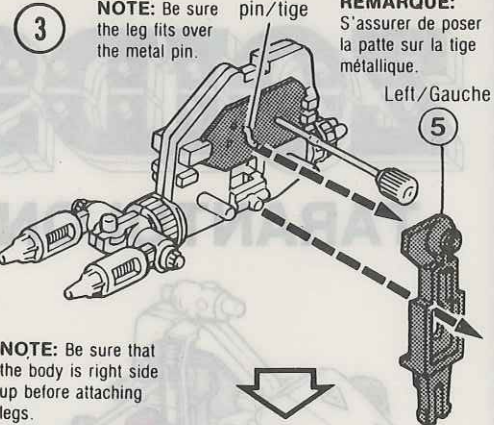
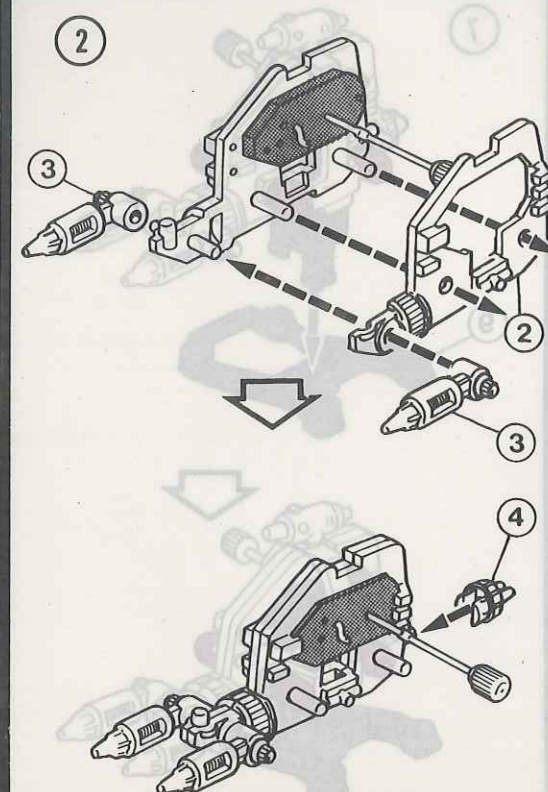
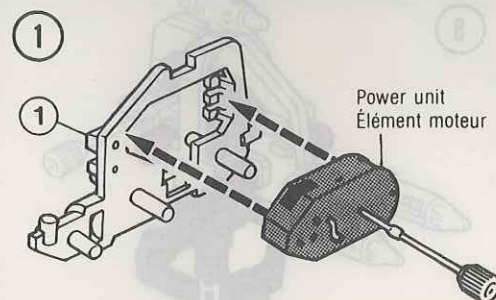
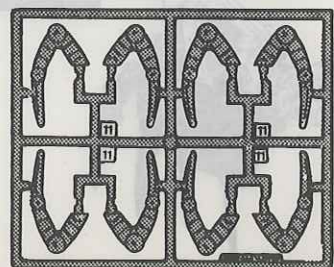
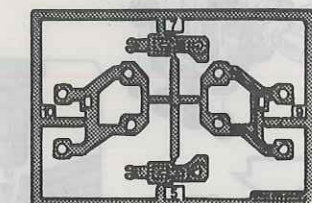
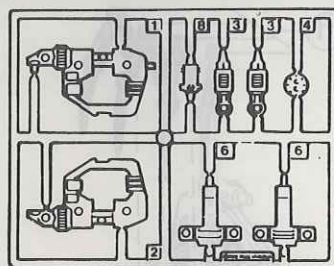
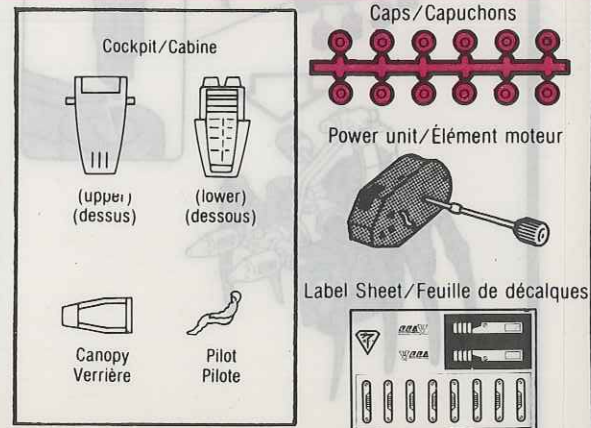
Now starting with step 1, use your safety scissors to cut the parts off the frame as needed. Remove excess plastic where part was cut from frame. Continue to put your Zoid together part by part. They snap together and do not require glue. When you're done just wind him up and watch the action start.

AVANT DE COMMENCER

Ne pas découper les pièces avant d'avoir bien étudié chaque illustration. Avant de découper, appaier chaque numéro de pièce (petites languettes situées sur le cadre) avec les numéros correspondants de chaque illustration.

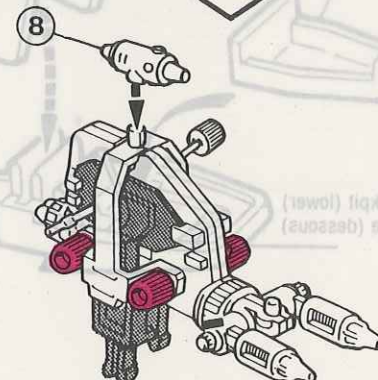
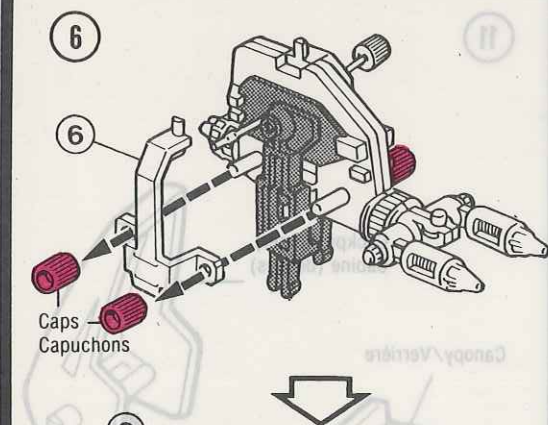
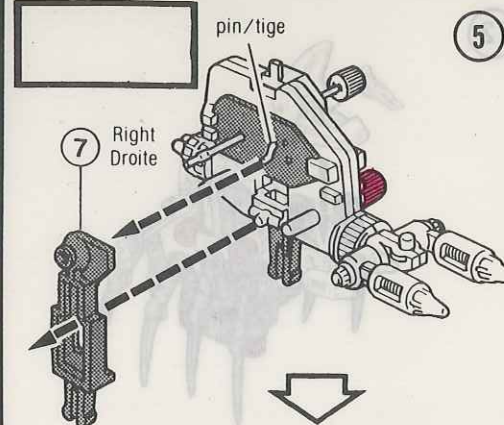
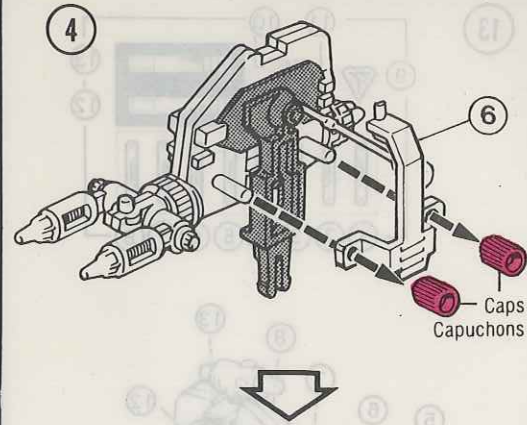
Étape 1. Se servir de ciseaux à bouts ronds pour découper au fur et à mesure les pièces du cadre. Enlever l'excès de plastique.

Assembler le Zoid[®] pièce par pièce. Aucune colle n'est requise pour assembler les pièces. Lorsque le Zoid[®] est assemblé, le remonter et le laisser aller.

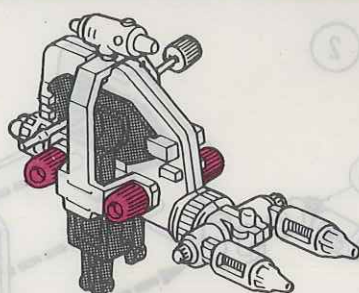


NOTE: Be sure that the body is right side up before attaching legs.

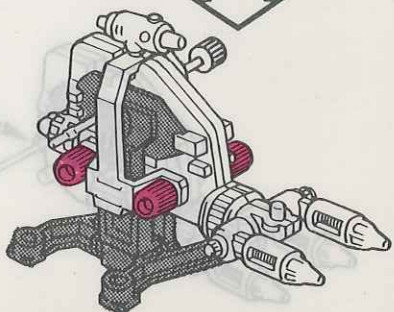
REMARQUE: S'assurer de placer le corps à l'endroit avant d'y attacher les pattes.



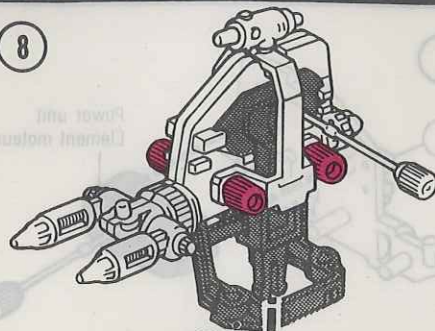
7



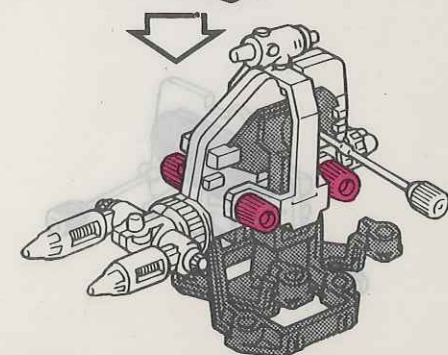
9



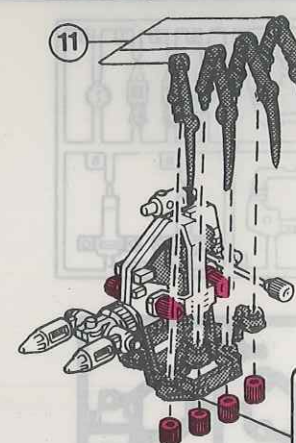
8



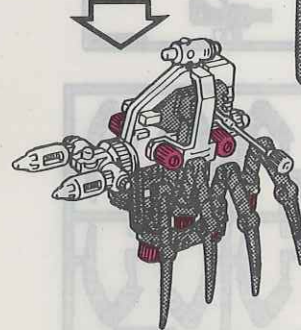
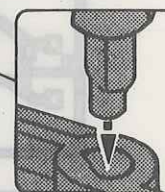
10



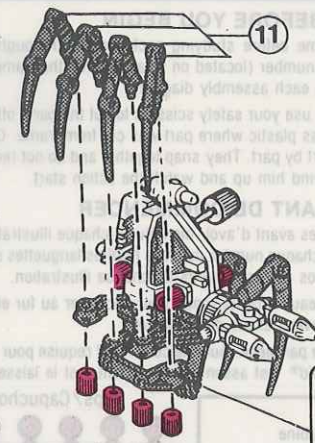
11



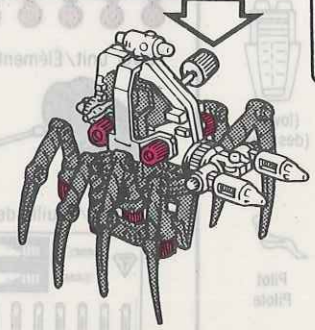
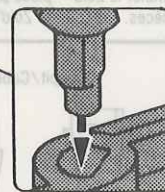
9



11



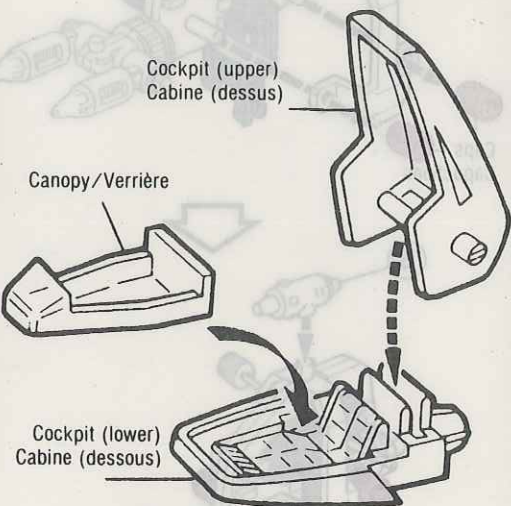
10



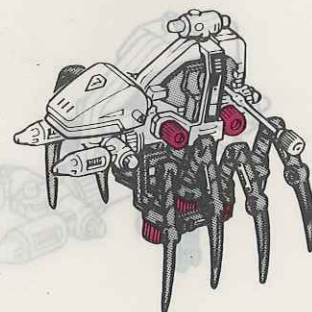
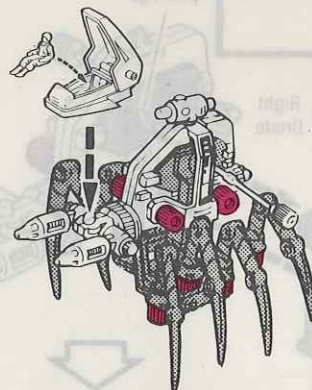
11

Cockpit (upper)
Cabine (dessus)

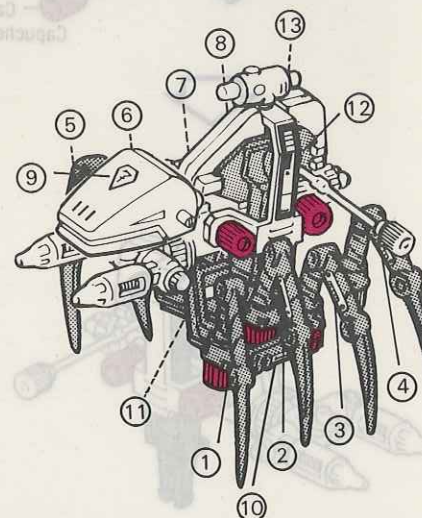
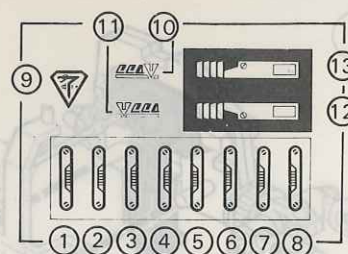
Canopy/Verrière

Cockpit (lower)
Cabine (dessous)

12

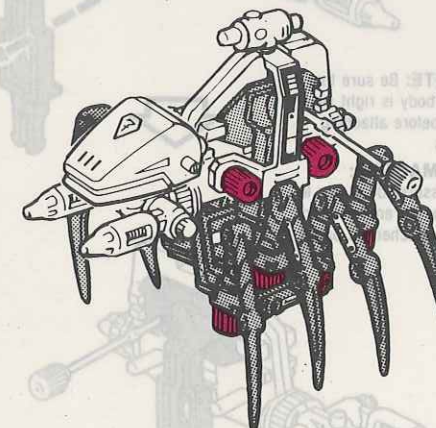


13



ZOIDS

TARANTULON



No. 2559

TOMY